

The logo for Triwaco, featuring the word "triwaco" in a white, lowercase, sans-serif font. Above the letter 'i' is a white curved line with a small dot at its peak, resembling a stylized wave or a water droplet.

triwaco

groundwater modelling software



2 Installation, settings and properties

Chapter 2: Installation, settings and properties

2.1 Installation and setup.....	2-3
2.1.1 Installation procedure.....	2-3
2.1.2 Customising the General Setup	2-6
2.1.3 Running Triwaco from a Network	2-8

2.1 Installation and setup

Hardware and software requirements

Triwaco runs under Windows 95/98, Windows NT/2000 and Windows XP. For editing input files a standard text editor is required.

The program requires a Pentium 166 MHz processor and at least 32-Mb of RAM. However, it is recommended to install 64-Mb of RAM for the program to run smoothly.

For graphical presentation a video-card and monitor that support 24-bit color display is needed. The video-adaptor should be installed accordingly.

Due to the large amount of data generated in the various data sets a hard disk of 1.0 Gb or larger is recommended.

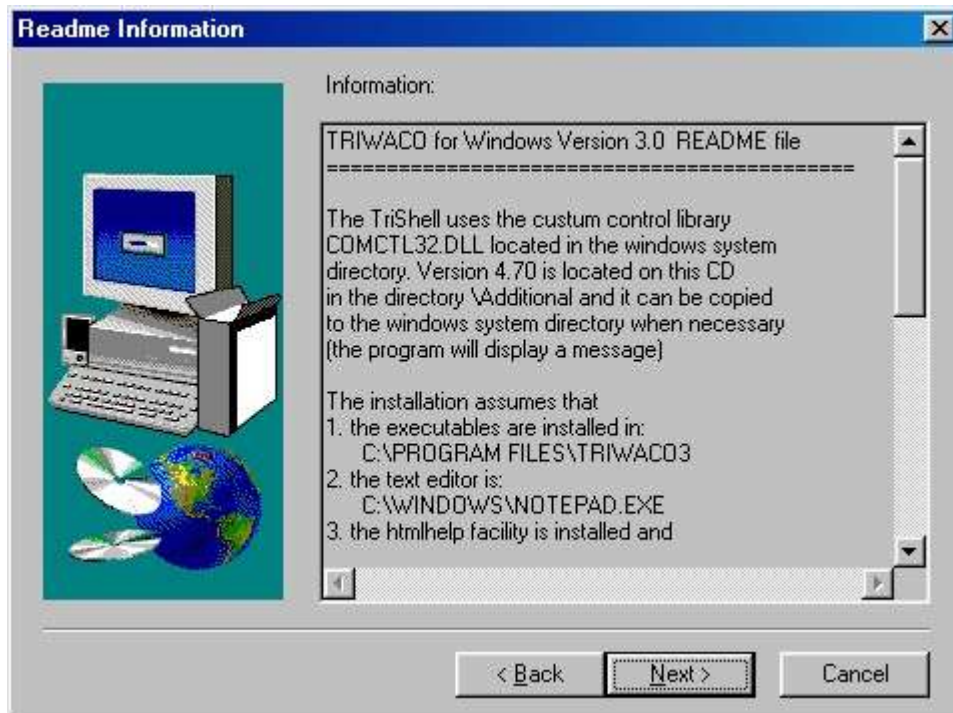
2.1.1 Installation procedure

Put the installation disk in your CD-ROM player.

Start the setup-program either by double-clicking it from the Windows Explorer, or using the Run-command from the start-button.



The setup-program will start the **Install Shield**. First the user is prompted to agree with the conditions in the Software License Agreement.



Now the program displays the following information window:
which reads:

TRIWACO for Windows Version 3.0 README file

=====

The TriShell uses the custom control library COMCTL32.DLL located in the windows system directory. Version 4.70 is located on this CD in the directory \SYSTEM and it can be copied to the windows system directory when necessary (the program will display a message)

The installation assumes that

1. the executables are installed in: C:\PROGRAM FILES\TRIWACO3
2. the text editor is: C:\WINDOWS\notepad.exe
3. the htmlhelp facility is installed and associated with the file type .chm

Ad 1. The user has to specify the installation path for the Triwaco programs and external allocators using the menu option Tools

Ad 2. The user has to specify the required editor using the menu option Tools|Triwaco programs

Ad 3. The htmlhelp can be installed from the installation file provided on the CD: \Additional\HtmlHelp.exe or use the (not compiled HTML help). In this case the documentation has to be installed with the program (included in the default installation) and the file Manual.html in the manual subdirectory of the installation directory has to be selected as the help file via the Tools menu

These settings are stored in the file TRIWACO.INI in the windows directory.

Next the user is prompted to choose between three types of setup (**Typical**, **Compact** or **Custom**) and to define the **Destination Directory**, e.g. the directory where the programs should be installed. By default C:\Program Files\Triwaco3.

Selecting the 'Browse'-button one can specify the **Destination Directory** or even select a Network drive for installation.

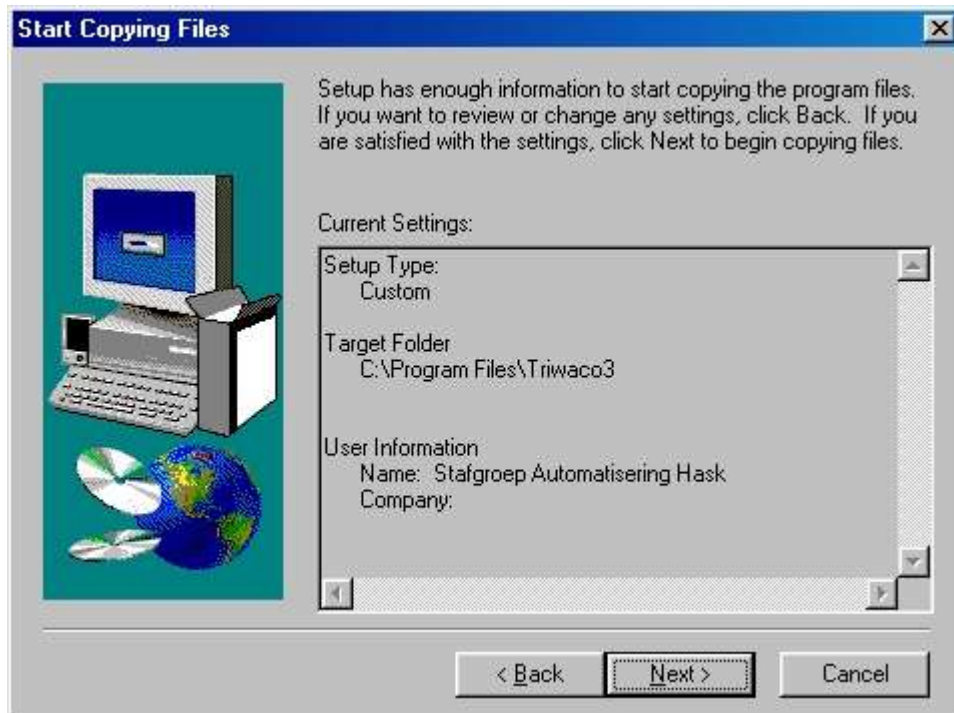


Running **Triwaco** from a network drive requires some additional information. This information should be given in the ini-files that reside on each computer from which the program will be run. How to supply this information is explained in the section "[Running Triwaco from a Network](#)" of this document.

The '**Typical**' and '**Compact**' installation copies a predefined set of files to the Destination Directory. Selecting the '**Custom**' setup the program prompts the user to choose from a list of options:



The Install Shield now resumes the information provided. After choosing the **Next**-button all programs and associated files will be copied to their destination and shortcuts to the programs will be created in the Program Folder "**Triwaco**".



The program also adds the ini-files to your Windows directories. If you have a previous version of **Triwaco** installed on your PC, it is recommended to make copies of the ini-files in the Windows directory, prior to installing the new version.

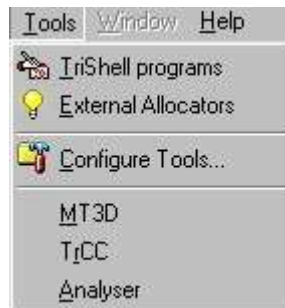
2.1.2 Customising the General Setup

After having copied all files the program is ready to run. Starting **TriShell** the user can now adjust the general settings selecting '**Tools**' from the menu bar.

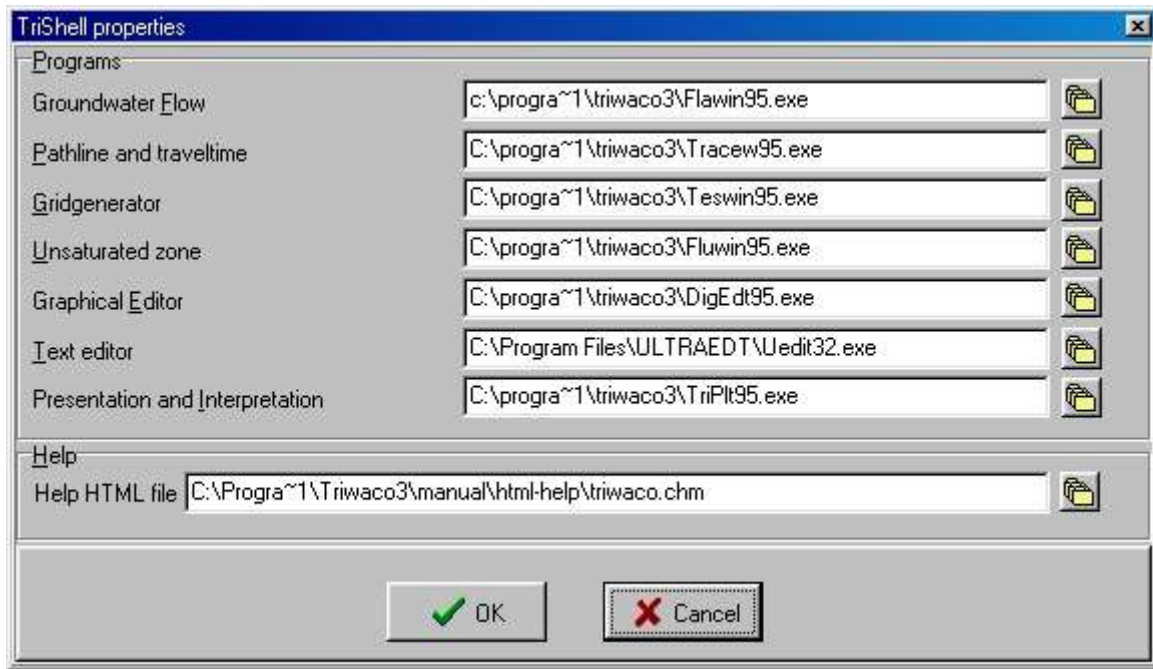
This pull-down menu has three sections to choose from:

[TriShell Programs](#), [External Allocators](#) and [Configure Tools](#).

Each of these sections allows the user to define, modify or add programs that are used by the **TriShell**.

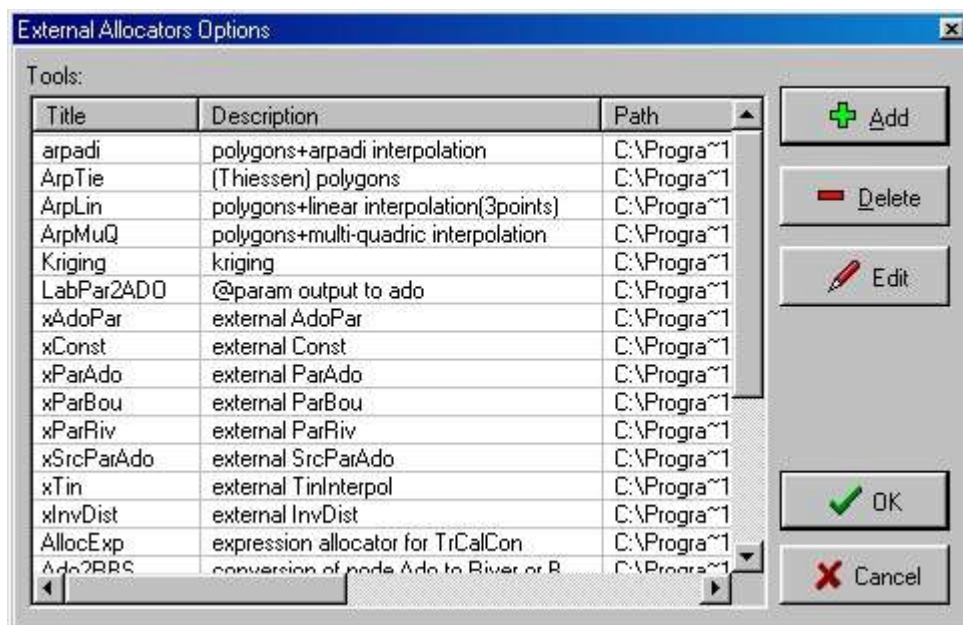


Selecting '**TriShell Programs**' from the pull down menu opens the TriShell Properties window. This window allows the user to define the programs to be used for the calculations with **Triwaco**. The various modules each require a different program. The user can also specify his favorite text editor. After installation of **Triwaco** the default settings are applied.



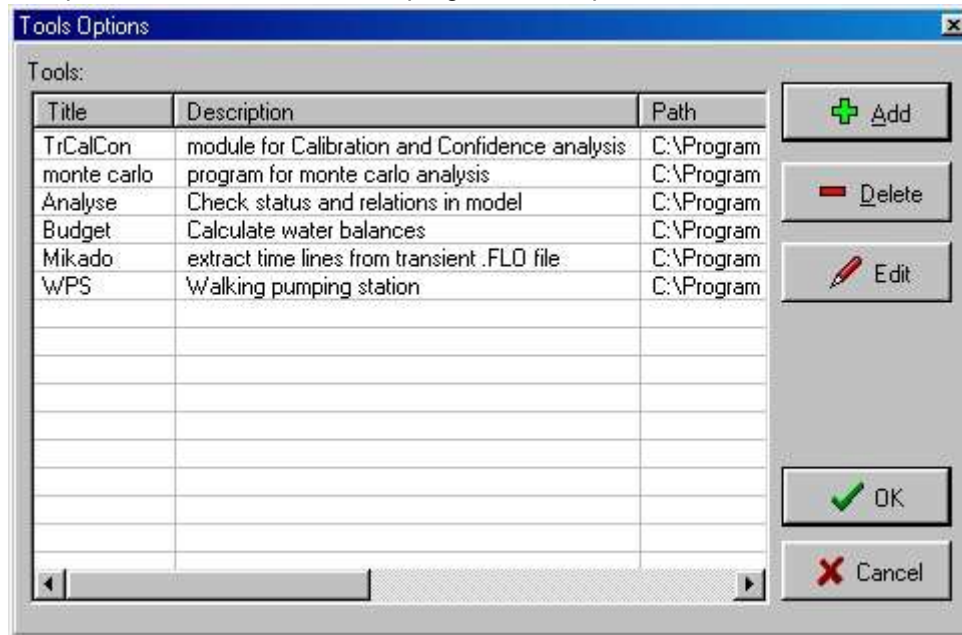
To change the default program settings simply select the appropriate box, browse to the desired location and select the file required. The modified settings will be saved in the Triwaco.ini file after confirming the selections with the OK-button.

Selecting 'External Allocators' from the pull down menu opens the External Allocators Options window. This window allows the user to specify parameter allocators other than those that are incorporated in **Triwaco**. A number of standard or [internal allocators](#) are build-in. An [external allocator](#) can be added by choosing 'Add' and specifying the appropriate name and description in the dialog box.



The **Delete**-button will remove the selected allocation program from the list. With the **Add**-button one can add programs to the list; a pop-up window will appear in which the name, description and file name and location are to be specified. Selecting the **Edit**-button the same pop-up window appears and the specifications may be modified. The modified settings will be saved in the Triwaco.ini file after confirming the selections with the OK-button.

Selecting '**Configure Tools**' from the pull down menu opens the Tools Options window. This window allows the user to specify auxiliary programs facilitating the modeling process. Choosing '**Add**' and specifying the appropriate name and description of the program in the dialog box adds a program to the Tools list displayed in the lower section of the Tools pull down menu. Once a program is added to the Tools list, selecting this program from the pull down menu will start the program in a separate window.



A number of [tools](#) developed for various purposes may be provided on request. The user also may add own programs to this section.

Typical programs to add to this toolbox are programs for automatic calibration, calculation of the water balance of sub-areas or for conversion of input and output parameters to other software programs.

Programs can be added, modified or deleted in the same way as the External Allocators. The modified settings will be saved in the Triwaco.ini file after confirming the selections with the OK-button. Tools added will be displayed in the Tools-menu below the **Configure Tools** section, from where the program can be activated by a simple mouse-click.

The Tools-menu is also available once a **Triwaco**-project is opened. Changes in the Programs, External Allocators or the Tools section while a Project is opened will not be regarded as changes of the default settings, but will only be valid for the actual **Triwaco**-project. Therefore, these modifications are not saved in the Triwaco.ini file but in the project's *.prj file. Thus, opening a project, information on the Programs, External Allocators or the Tools section save in the *.prj file will override the default settings.

2.1.3 Running Triwaco from a Network

A local installation can be converted to a network installation, in which only the ini-files are stored locally and all other files on the network. To do so one should follow the next procedure:

1. Copy files from the program directory (typically C:\Program Files\Triwaco3) to a network directory "**A**".
2. Copy files from the Windows System directory (typically C:\Windows\System) to a network directory in path "**B**".
3. Make the manual accessible by putting the installation CD in a network CD drive or copying the manual files from the CD to a network directory "**C**".
4. Edit the TRIWACO.INI file to reflect the new location (directory "**A**") of the programs.

5. Edit the files TRIWACO.INI, TRIPLOTT.INI and DIGEDIT.INI files to reflect the location of the manual (directory "C").
6. Put the edited .INI files in the local Windows directory (typically C:\Windows)
7. Create an icon with a shortcut to TriShell.exe in directory "A".
8. Optionally add the listed keys to the registry.

Having done this the various directories should contain the following files:

Local Windows directory	Network directory "A" (not specified in path)	Network directory "B" (specified in path)	Network directory "C" (not specified in path)
Triwaco.ini Triplot.ini Digedit.ini	arpwin95.exe digedt95.exe flawin95.exe fluwin95.exe teswin95.exe trace95.exe tracew95.exe tript95.exe trishell.exe allocators.dll libjpeg.dll libtiff.dll trialloc.dll cropf-m.dat cropf-p.dat intcap.dat sink.dat soilcov.dat soils.dat readme.txt	bc500rtl.dll btl70.dll cw3220.dll iwalib.dll triwaco.dll zin03b5.dll zpn03b5.dll	All files belonging to the Manual can be copied from CD to any location. (or accessed directly on CD)